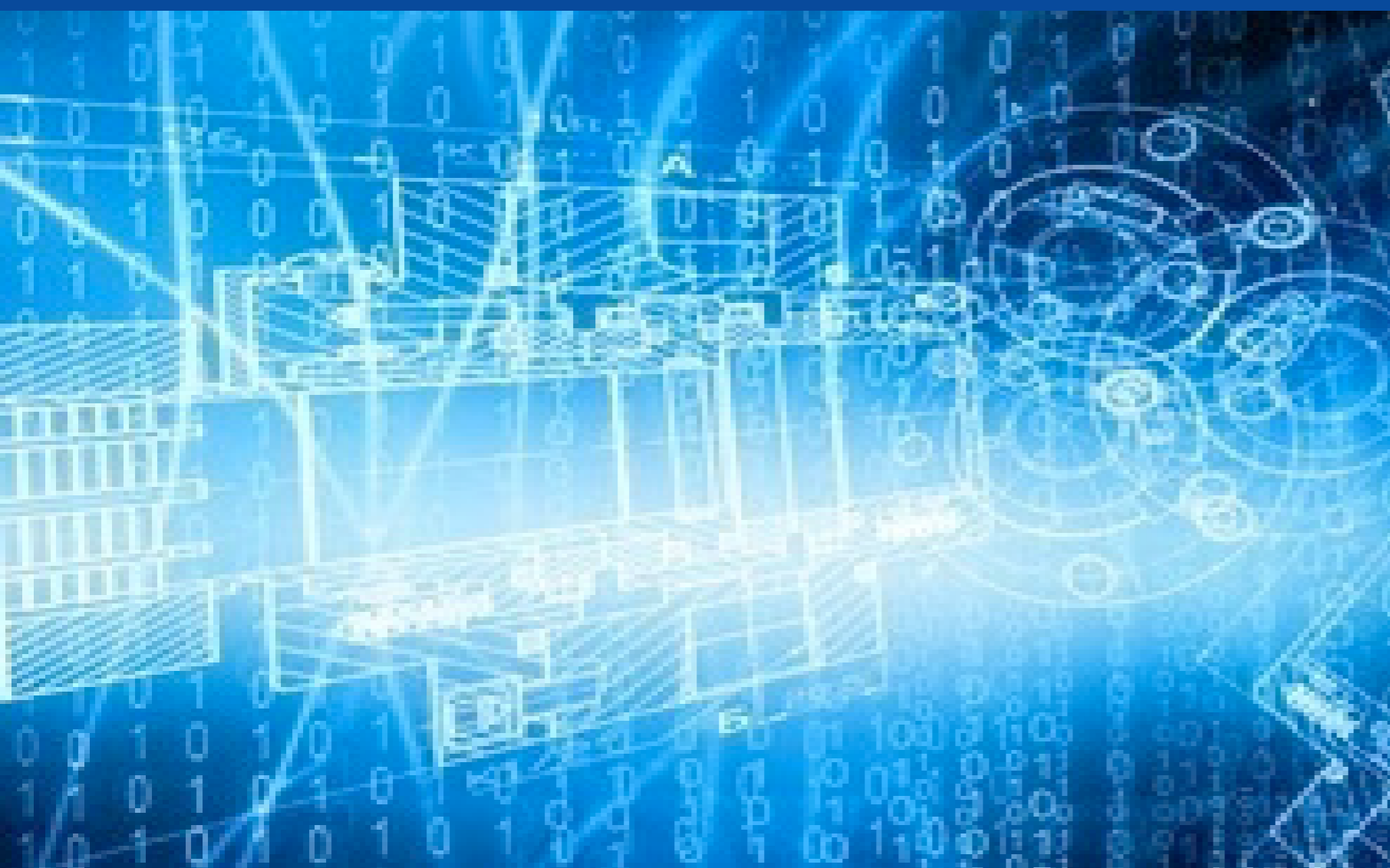


July 2021 Medicaid and CHIP Enrollment Trends Snapshot



*Center for Medicaid
and CHIP Services*

Enrollment Snapshot

- To be responsive to questions on Medicaid and CHIP enrollment, particularly given the impact of the COVID-19 public health emergency (PHE), this Enrollment Snapshot captures high level information on the most recently submitted month of Performance Indicator Data within the context of trends since February 2020,¹ focusing on:
 - Total Medicaid and CHIP enrollment
 - Medicaid enrollment
 - CHIP enrollment
 - Adult enrollment
 - Child enrollment
- This analysis also captures high level information on the trend in the number of Medicaid and CHIP applications received by states.

¹ February 2020 serves as a baseline prior to the impacts of the COVID-19 pandemic and the enactment of the Families First Coronavirus Response Act (FFCRA) in March 2020. Section 6008 of FFCRA includes a continuous enrollment requirement, which makes available a temporary 6.2 percentage point increase to each state or territory's federal medical assistance percentage (FMAP) during the national PHE. As a condition of receiving the FMAP increase, states must meet several requirements pertaining to eligibility and maintenance of enrollment.

Key Findings

- In July 2021, 83,614,777 individuals were enrolled in Medicaid and CHIP, an increase of 419,736 compared to June 2021.
 - 76,705,180 individuals were enrolled in Medicaid, an increase of 402,902 compared to June 2021.
 - 6,909,597 individuals were enrolled in CHIP, an increase of 16,834 compared to June 2021.
- Since February 2020, enrollment in Medicaid and CHIP has increased by 12,926,917 individuals (18.3%).
 - Medicaid enrollment increased by 12,677,443 individuals (19.8%).
 - CHIP enrollment increased by 249,474 individuals (3.7%).
- The Medicaid enrollment increases are likely driven by COVID-19 and the continuous enrollment requirement in the Families First Coronavirus Response Act (FFCRA).¹

¹ Families First Coronavirus Response Act, Pub. L. No. 116-127, Sec 6008, Temporary Increase of Medicaid FMAP. <https://www.congress.gov/116/plaws/publ127/PLAW-116publ127.pdf>

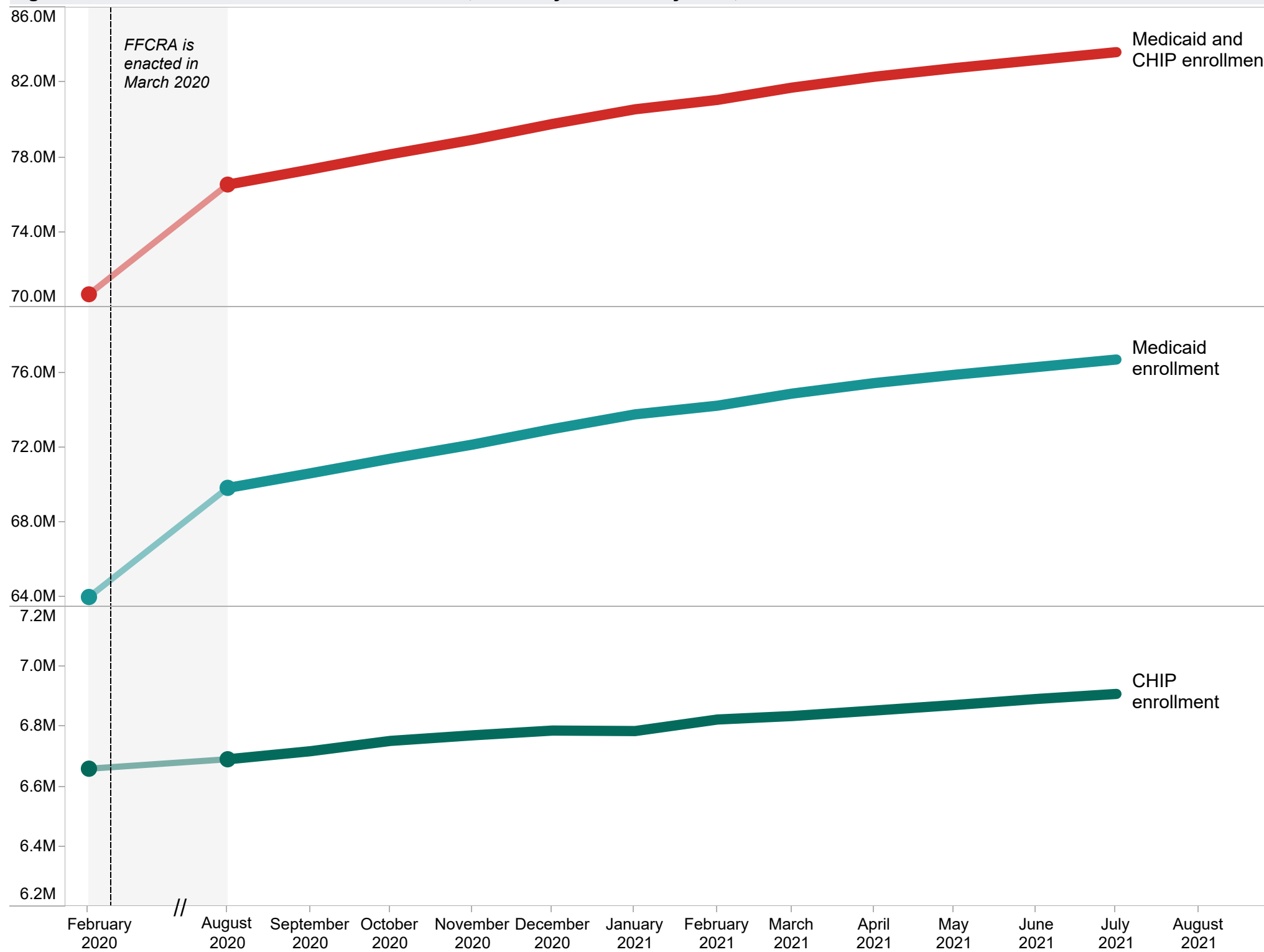
Key Findings (continued)

- In July 2021, about 2.0 million applications for Medicaid and CHIP were submitted directly to states.¹
 - The number of applications submitted directly to states was about 5 percent lower in July 2021 compared to June 2021.
- In July 2021, about 168,000 applications for Medicaid and CHIP were transferred from the Federally Facilitated Marketplace (FFM) to states.¹
 - Following the start of the 2021 Special Enrollment Period in February 2021, the number of transferred applications rose from 137,000 in February 2021 to 291,000 in April 2021.² The number of transferred applications fell to 171,000 in May 2021 and then to 149,000 in June 2021. The number of transferred applications then rose to 168,000 in July 2021.

¹ These counts include applications received by 48 states and the District of Columbia. Kansas and Maine are excluded because these states did not have complete data on the number of applications submitted directly to the state from February 2020 to July 2021.

² On January 28, 2021, [CMS announced](#) that it would provide a Special Enrollment Period for individuals to apply for and enroll in coverage via the HealthCare.gov Marketplace platform from February 15, 2021 through May 15, 2021. On March 23, 2021, [President Biden announced](#) that CMS would extend access to the Special Enrollment Period through August 15, 2021.

Figure 1. National Medicaid and CHIP enrollment, February 2020 to July 2021, CMS Performance Indicator Data



Date	Medicaid and CHIP enrollment	Medicaid enrollment	CHIP enrollment
July 2021	83,614,777	76,705,180	6,909,597
June 2021	83,195,041	76,302,278	6,892,763
May 2021	82,761,078	75,888,651	6,872,427
April 2021	82,301,711	75,447,542	6,854,169
March 2021	81,721,120	74,885,342	6,835,778
February 2021	81,065,712	74,241,457	6,824,255
January 2021	80,563,040	73,777,345	6,785,695
December 2020	79,782,581	72,995,197	6,787,384
November 2020	78,938,471	72,166,966	6,771,505
October 2020	78,163,979	71,411,134	6,752,845
September 2020	77,352,267	70,633,734	6,718,533
August 2020	76,546,335	69,854,698	6,691,637
February 2020	70,687,860	64,027,737	6,660,123

Annual trend, August 2020 to July 2021

From August 2020 to July 2021, national Medicaid and CHIP enrollment increased by 7,068,442 individuals (9.2%).

Monthly trend, June 2021 to July 2021

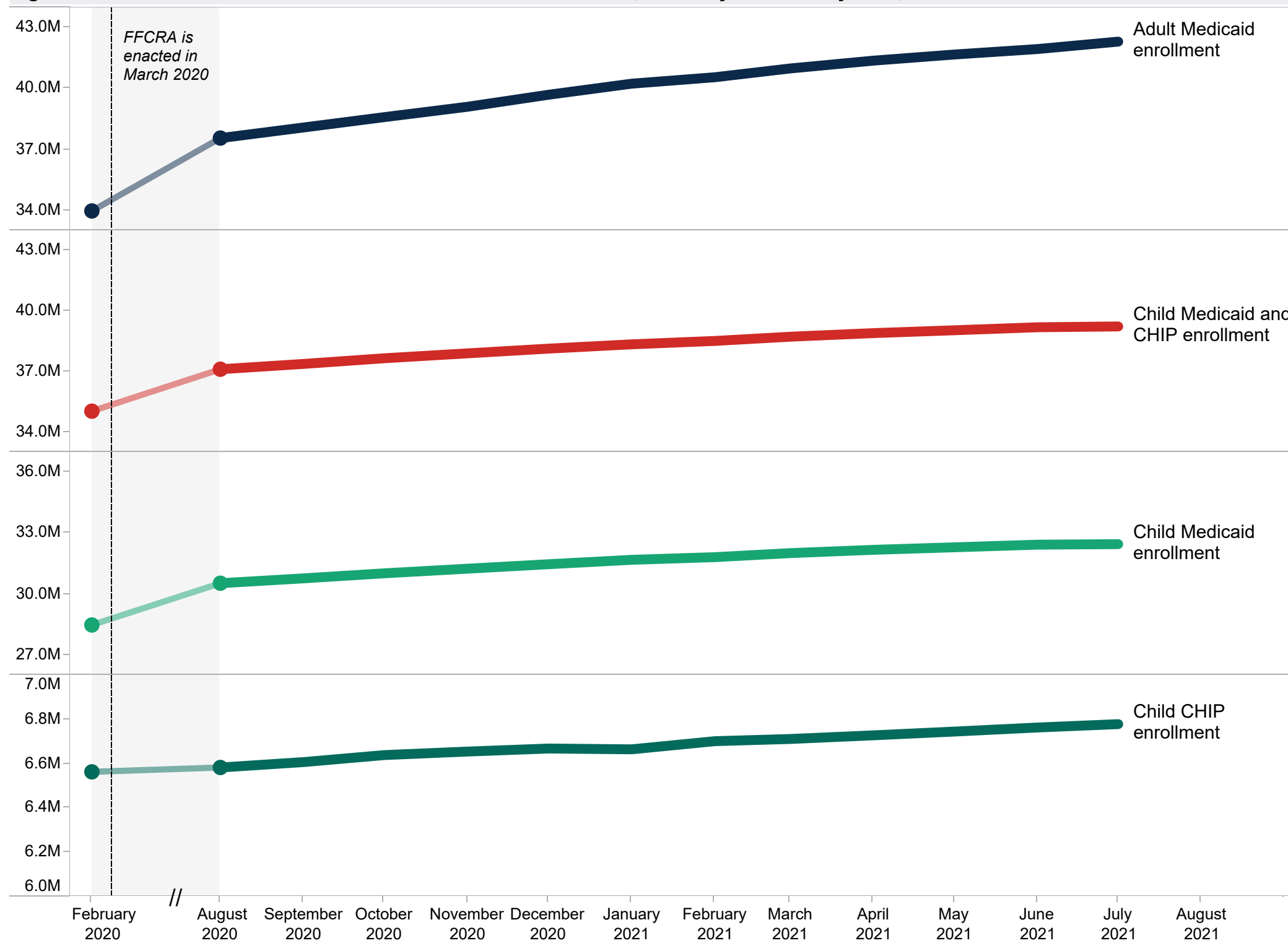
<u>Total enrollment</u>	<u>Medicaid enrollment</u>	<u>CHIP enrollment</u>
Increased by 419,736 (+0.5%) ↑	Increased by 402,902 (+0.5%) ↑	Increased by 16,834 (+0.2%) ↑

Cumulative change, February 2020 to July 2021*

<u>Total enrollment</u>	<u>Medicaid enrollment</u>	<u>CHIP enrollment</u>
Increased by 12,926,917 (+18.3%) ↑	Increased by 12,677,443 (+19.8%) ↑	Increased by 249,474 (+3.7%) ↑

Source: Medicaid and CHIP Eligibility and Enrollment Performance Indicator Data as of November 16, 2021.
Note: This analysis includes preliminary enrollment data from 50 states and the District of Columbia. "FFCRA" refers to the Families First Coronavirus Response Act. Section 6008 of FFCRA includes a continuous enrollment requirement, which makes available a temporary 6.2 percentage point increase to each state or territory's federal medical assistance percentage (FMAP) during the national public health emergency. As a condition of receiving the FMAP increase, states must meet several requirements pertaining to eligibility and maintenance of enrollment.
 *The cumulative change compares the most recent enrollment data to February 2020, which serves as a baseline of enrollment prior to the impacts of the COVID-19 pandemic and FFCRA's continuous enrollment requirement. For additional information on Medicaid and CHIP enrollment from December 2019 to July 2021, please see Appendix A.

Figure 2. National adult and child enrollment in Medicaid and CHIP, February 2020 to July 2021, CMS Performance Indicator Data



Date	Adult Medicaid enrollment	Child Medicaid and CHIP enrollment	Child Medicaid enrollment	Child CHIP enrollment
July 2021	42,312,260	39,230,415	32,452,534	6,777,881
June 2021	41,945,921	39,189,564	32,426,912	6,762,652
May 2021	41,675,964	39,040,510	32,296,195	6,744,315
April 2021	41,374,944	38,899,702	32,172,268	6,727,434
March 2021	40,988,792	38,721,058	32,010,173	6,710,885
February 2021	40,555,718	38,511,653	31,810,602	6,701,051
January 2021	40,237,825	38,343,406	31,679,134	6,664,272
December 2020	39,690,199	38,129,375	31,461,546	6,667,829
November 2020	39,099,406	37,896,263	31,242,079	6,654,184
October 2020	38,587,198	37,652,095	31,013,765	6,638,330
September 2020	38,077,302	37,371,537	30,764,812	6,606,725
August 2020	37,552,472	37,106,481	30,524,234	6,582,247
February 2020	33,956,090	35,025,981	28,463,375	6,562,606



Annual trend, August 2020 to July 2021

From August 2020 to July 2021, national adult and child enrollment increased by 6,883,722 individuals (9.2%).

Monthly trend, June 2021 to July 2021

<u>Adult Medicaid enrollment</u>	<u>Child Medicaid and CHIP enrollment</u>
Increased by 366,339 (+0.9%) 	Increased by 40,851 (+0.1%) 

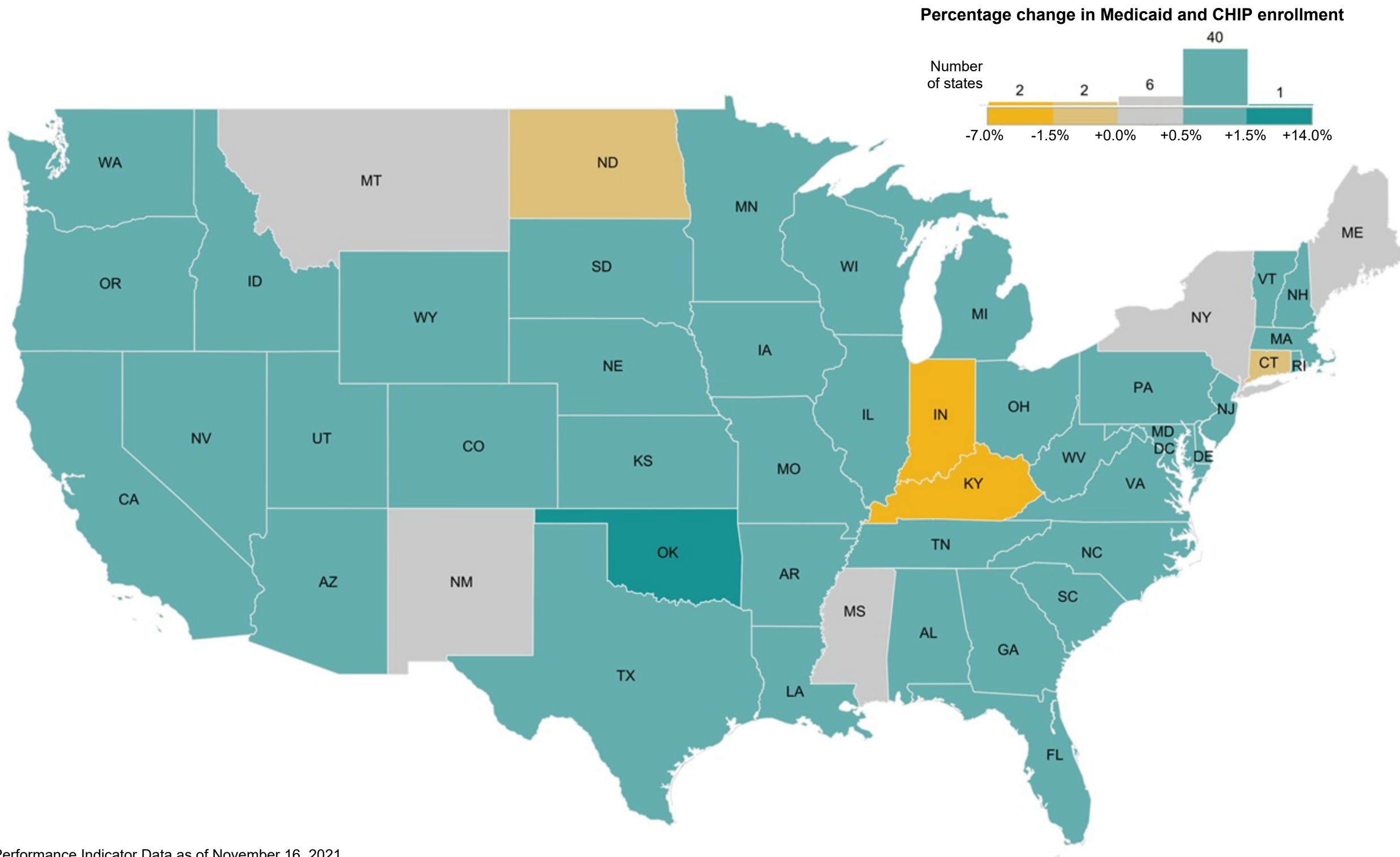
Cumulative change, February 2020 to July 2021*

<u>Adult Medicaid enrollment</u>	<u>Child Medicaid and CHIP enrollment</u>
Increased by 8,356,170 (+24.6%) 	Increased by 4,204,434 (+12.0%) 

Source: Medicaid and CHIP Eligibility and Enrollment Performance Indicator Data as of November 16, 2021.
Note: This analysis includes preliminary enrollment data from 49 states and the District of Columbia. Arizona is excluded because the state did not report the breakouts for adult and child enrollment between February 2020 and July 2021. "FFCRA" refers to the Families First Coronavirus Response Act. Section 6008 of FFCRA includes a continuous enrollment requirement, which makes available a temporary 6.2 percentage point increase to each state or territory's federal medical assistance percentage (FMAP) during the national public health emergency. As a condition of receiving the FMAP increase, states must meet several requirements pertaining to eligibility and maintenance of enrollment.
 *The cumulative change compares the most recent enrollment data to February 2020, which serves as a baseline of enrollment prior to the impacts of the COVID-19 pandemic and FFCRA's continuous enrollment requirement. For additional information on adult and child enrollment in Medicaid and CHIP from December 2019 to July 2021, please see Appendix B.

Figure 3. Change in total Medicaid and CHIP enrollment, June 2021 to July 2021, CMS Performance Indicator Data

Medicaid and CHIP enrollment increased by 0.5 to 1.5 percent in 39 states and the District of Columbia. In 6 states, total Medicaid and CHIP enrollment increased by 0.0 to 0.5 percent. In 2 states (Connecticut and North Dakota), total Medicaid and CHIP enrollment decreased by 0.0 to 1.5 percent. In 2 states (Indiana and Kentucky), total Medicaid and CHIP enrollment decreased by 5.7 percent and 6.9 percent, respectively.* In Oklahoma, total Medicaid and CHIP enrollment increased by 13.7 percent (123,195 individuals); this was largely due to the state's new Medicaid expansion program, which began covering eligible adults on July 1, 2021.



Source: Medicaid and CHIP Eligibility and Enrollment Performance Indicator Data as of November 16, 2021.

Note: This analysis includes preliminary enrollment data from 50 states and the District of Columbia.

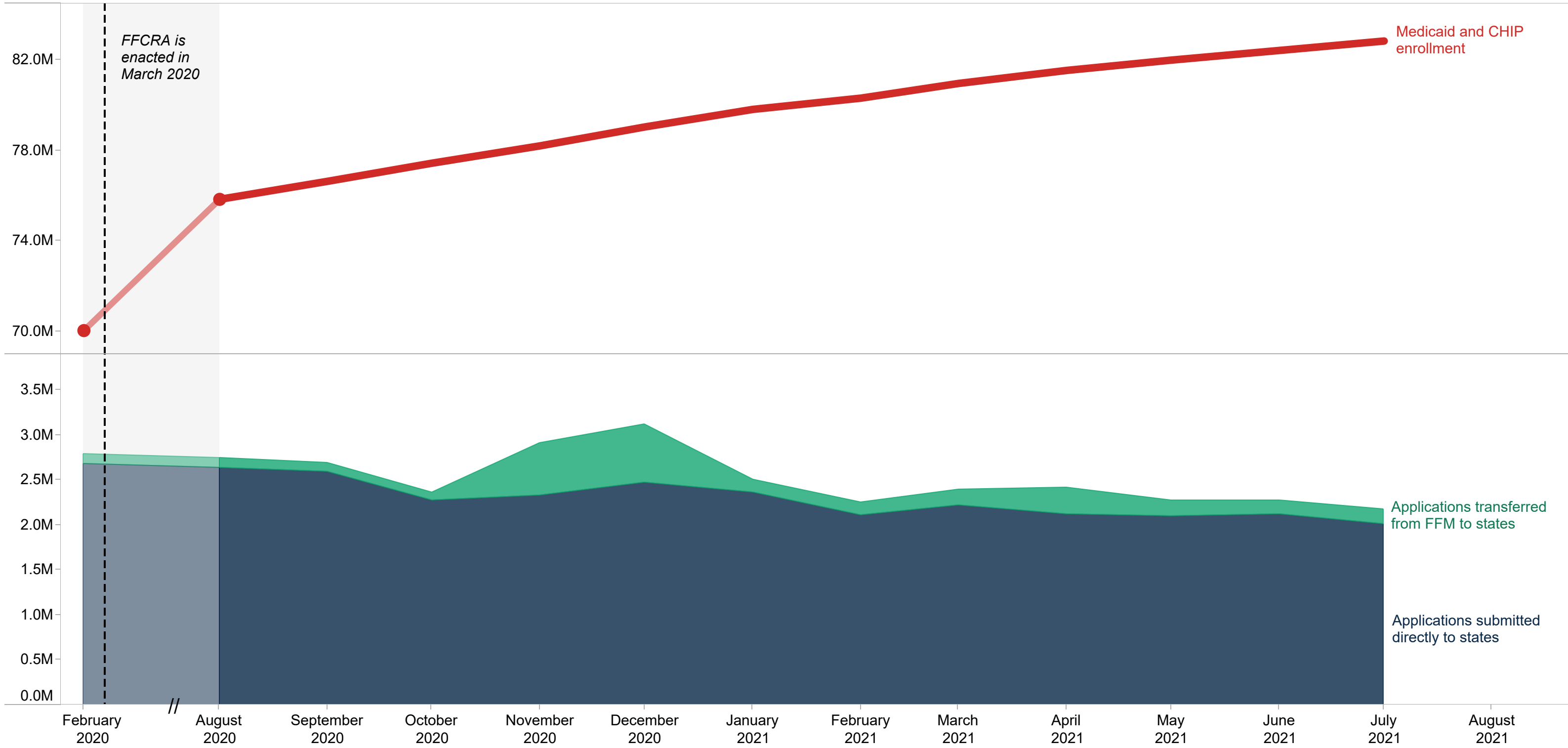
***Data quality:** (1) Indiana's reporting of total Medicaid and CHIP enrollment decreased by 5.7 percent (102,174 individuals) in July 2021; this decrease is the result of the state correcting its reporting methodology. Fluctuations in Indiana's enrollment reporting are expected in the coming months as the state continues to correct its methodology. (2) In Kentucky, total Medicaid and CHIP enrollment decreased by 6.9 percent (109,808 individuals) in July 2021. Kentucky attributed the enrollment decrease to removing individuals who had been receiving temporary coverage under the state's presumptive eligibility policy.

Figure 4. National Medicaid and CHIP applications submitted directly to states from 2018 to 2021, CMS Performance Indicator Data



Source: Medicaid and CHIP Eligibility and Enrollment Performance Indicator Data as of November 16, 2021.
Note: Applications submitted directly to states include applications received by any state agency with the authority to make Medicaid or CHIP eligibility determinations, including the Medicaid agency, a separate CHIP agency, or a state-based marketplace. Applications transferred from the FFM are not included. This analysis includes preliminary applications data from 44 states and the District of Columbia. Arizona, Arkansas, Colorado, Kansas, Maine, and Tennessee are excluded because these states did not report applications data for one or more months between January 2018 and July 2021.

Figure 5. Comparison of Medicaid and CHIP enrollment with the number of applications received, February 2020 to July 2021, CMS Performance Indicator Data

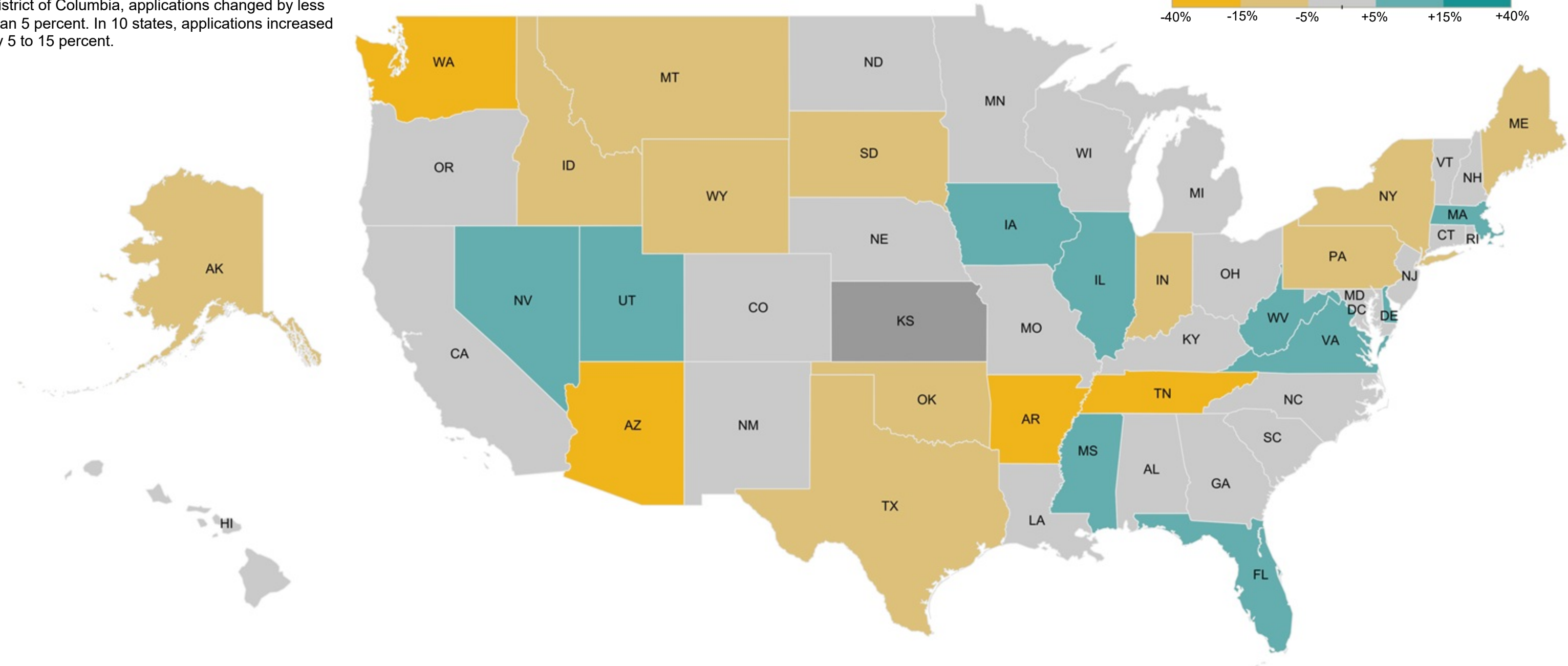
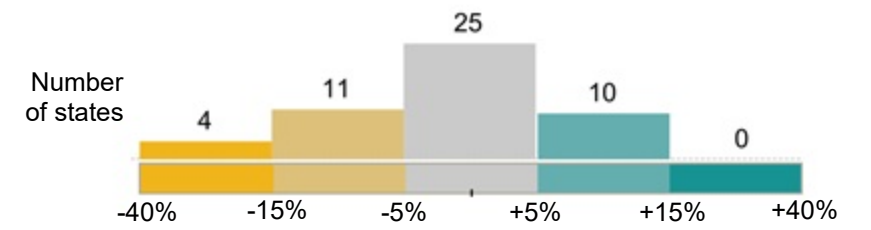


Source: Medicaid and CHIP Eligibility and Enrollment Performance Indicator Data as of November 16, 2021.
Note: Applications submitted directly to states include applications received by any state agency with the authority to make Medicaid or CHIP eligibility determinations, including the Medicaid agency, a separate CHIP agency, or a state-based marketplace. Applications transferred from the FFM to states include the total number of accounts electronically transferred from the FFM to states for Medicaid or CHIP. This analysis includes preliminary enrollment, applications, and account transfer data from 48 states and the District of Columbia. Kansas and Maine did not report data on applications submitted directly to the state for one or more months between February 2020 and July 2021, and so are excluded from this analysis.
Data quality: Nevada transitioned to a state-based marketplace for plan year 2020, but unexpectedly reported 2,245 applications transferred from the FFM to the state in January 2021. New Jersey and Pennsylvania transitioned to state-based marketplaces for plan year 2021; both states are working with CMS to report their data correctly before and after the transition. These three states are retained in the analysis despite these concerns about data quality.

Figure 6. Change in Medicaid and CHIP applications submitted directly to states, June 2021 to July 2021, CMS Performance Indicator Data

Nationally, the number of Medicaid and CHIP applications submitted directly to states was about 5 percent lower in July 2021 compared to June 2021. In 4 states, applications decreased by 15 to 40 percent, while in 11 states, applications decreased by 5 to 15 percent. In 24 states and the District of Columbia, applications changed by less than 5 percent. In 10 states, applications increased by 5 to 15 percent.

Percentage change in Medicaid and CHIP applications



Source: Medicaid and CHIP Eligibility and Enrollment Performance Indicator Data as of November 16, 2021.
Note: Applications submitted directly to states include applications received by any state agency with the authority to make Medicaid or CHIP eligibility determinations, including the Medicaid agency, a separate CHIP agency, or a state-based marketplace. Applications transferred from the FFM are not included. This analysis includes preliminary applications data from 49 states and the District of Columbia. Kansas is excluded because the state did not report applications data for June 2021 and July 2021.

Appendices

Appendix A. National Medicaid and CHIP enrollment, December 2019 to July 2021

Date	Medicaid and CHIP enrollment	Medicaid enrollment	CHIP enrollment
December 2019	70,626,835	64,000,680	6,626,155
January 2020	70,739,195	64,098,670	6,640,525
February 2020	70,687,860	64,027,737	6,660,123
March 2020	70,976,240	64,281,892	6,694,348
April 2020	72,418,165	65,677,618	6,740,547
May 2020	73,559,217	66,853,058	6,706,159
June 2020	74,699,696	68,016,386	6,683,310
July 2020	75,586,191	68,890,063	6,696,128
August 2020	76,546,335	69,854,698	6,691,637
September 2020	77,352,267	70,633,734	6,718,533
October 2020	78,163,979	71,411,134	6,752,845
November 2020	78,938,471	72,166,966	6,771,505
December 2020	79,782,581	72,995,197	6,787,384
January 2021	80,563,040	73,777,345	6,785,695
February 2021	81,065,712	74,241,457	6,824,255
March 2021	81,721,120	74,885,342	6,835,778
April 2021	82,301,711	75,447,542	6,854,169
May 2021	82,761,078	75,888,651	6,872,427
June 2021	83,195,041	76,302,278	6,892,763
July 2021	83,614,777	76,705,180	6,909,597

Source: Medicaid and CHIP Eligibility and Enrollment Performance Indicator Data as of November 16, 2021.
Note: This table summarizes Medicaid and CHIP enrollment since December 2019. This table is provided as a supplement to Figure 1, and includes preliminary enrollment data from 50 states and the District of Columbia.

Appendix B. National adult and child enrollment in Medicaid and CHIP, December 2019 to July 2021

Date	Adult Medicaid enrollment	Child Medicaid and CHIP enrollment	Child Medicaid enrollment	Child CHIP enrollment
December 2019	33,870,983	35,047,779	28,519,074	6,528,705
January 2020	33,995,955	35,040,608	28,496,798	6,543,810
February 2020	33,956,090	35,025,981	28,463,375	6,562,606
March 2020	34,034,610	35,194,886	28,601,431	6,593,455
April 2020	35,028,350	35,608,582	28,969,156	6,639,426
May 2020	35,709,894	36,031,961	29,428,694	6,603,267
June 2020	36,416,510	36,443,254	29,864,735	6,578,519
July 2020	36,946,274	36,777,509	30,189,171	6,588,338
August 2020	37,552,472	37,106,481	30,524,234	6,582,247
September 2020	38,077,302	37,371,537	30,764,812	6,606,725
October 2020	38,587,198	37,652,095	31,013,765	6,638,330
November 2020	39,099,406	37,896,263	31,242,079	6,654,184
December 2020	39,690,199	38,129,375	31,461,546	6,667,829
January 2021	40,237,825	38,343,406	31,679,134	6,664,272
February 2021	40,555,718	38,511,653	31,810,602	6,701,051
March 2021	40,988,792	38,721,058	32,010,173	6,710,885
April 2021	41,374,944	38,899,702	32,172,268	6,727,434
May 2021	41,675,964	39,040,510	32,296,195	6,744,315
June 2021	41,945,921	39,189,564	32,426,912	6,762,652
July 2021	42,312,260	39,230,415	32,452,534	6,777,881

Source: Medicaid and CHIP Eligibility and Enrollment Performance Indicator Data as of November 16, 2021.
Note: This table summarizes adult and child enrollment in Medicaid and CHIP since December 2019. This table is provided as a supplement to Figure 2, and includes preliminary enrollment data from 49 states and the District of Columbia. Arizona is excluded from both Figure 2 and Appendix B because the state did not report the breakouts for adult and child enrollment between February 2020 and July 2021.

Background

- This is a Center for Medicaid & CHIP Services (CMCS) Medicaid and CHIP Coverage Learning Collaborative (MAC LC) project that monitors Medicaid and Children's Health Insurance Program (CHIP) enrollment trends, primarily using the Centers for Medicare and Medicaid Services (CMS) Performance Indicator Data.
- The MAC LC is a CMCS project that provides a forum for facilitated discussion and learning across CMS and states, with the goal of implementing and improving the programs, tools, and systems needed to ensure high-performing state health insurance programs. The MAC LC has enabled CMS to more effectively identify issues and also monitor and improve program performance.
- This snapshot is a companion to the July 2021 Medicaid & CHIP Application, Eligibility, and Enrollment Data posted on [Medicaid.gov](https://www.Medicaid.gov).
- The Enrollment Trends project primarily relies on Performance Indicator Data. All states—including the District of Columbia—provide data each month about their Medicaid and CHIP eligibility and enrollment activity. These data reflect a range of indicators related to key application, eligibility, and enrollment processes within the state Medicaid and CHIP agency. The complete data set is available on Data.Medicaid.gov.